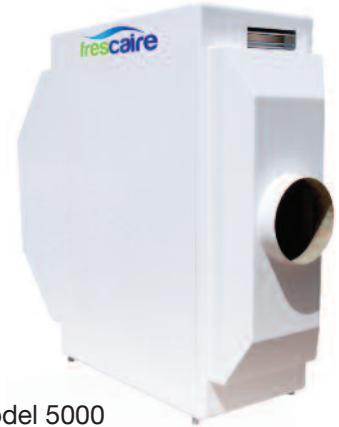




Model 1500



Model 5000

TECHNICAL DATASHEET

Model		Model 1500	Model 5000
Primary intake air at nominal output	ft ³ /h	77692	264840
Discharged process air at nominal output	ft ³ /h	24720	88286
Cooled ventilation air at nominal output	ft ³ /h	52972	176574
Inlet air conditions	°F / %RH	88,7 / 42,7	88,7 / 42,7
Supply air conditions	°F / %RH	72,5 / 72,5	73,9 / 69,1
Water consumption at nominal output	Gal / Hour	2.15	8

Fan

Fan type	Ziehl Abbeg	GR35V-ZIK.DC.1R	GR40C-ZID.DC.1R
Fan frequency	n ⁻¹	Variable	Variable
Voltage / phase / frequency	V / n° / Hz	1~200-277V 50 / 60	3~380-480 50 / 60
Electrical consumption at nominal airflow	kW	0.37	2.1
Maximum current	A	4.5	5.4
Voltage	V	230	400
Sound production 3 metres at nominal airflow	A/M/B dB(A)	57	67.5

Dimensions

Unit dimensions with controlpanel and lock-out mounted

Width	Inch	32.68	33.78
Length	Inch	53.86	105.28
Height	Inch	76.85	83.23

Unit dimensions with controlpanel and lock-out unmounted

Width	Inch	27.64	28.74
Length	Inch	53.86	105.28
Height	Inch	76.85	83.23

Main air-inlet (HxW)	Inch	21.65 x 21.65	21.65 x 21.65
Supply air-outlet ØD	Inch	9.65	15.16
Process-air-outlet (HxW)	Inch	19.69 x 3,94	19.69 x 3,94
Net. Weight	lbs	298	860
Refrigerant	Type	R718	R718
Operating range	°F	59°F - 140°F	59°F - 140°F

Filter

Filter type	Vokes Air	Vokes Air
Filter class	F7	F7

Specified models and specifications are subject to change